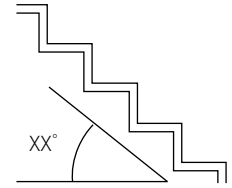
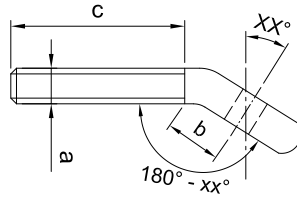


ÖSE MIT AUSSENGEWINDE, GEBOGEN_EYE WITH EXTERNAL THREAD, BENDED



Artikelnummer Part number		a	b	c	XX*
885-0600-XX DWG	886-0600-XX	M6	14	47	05° - 45°
885-0800-XX DWG	886-0800-XX	M8	21	57	05° - 45°
885-1000-XX DWG	886-1000-XX	M10	27	63	05° - 45°
885-1200-XX DWG	886-1200-XX	M12	30	80	05° - 45°

*XX für die Angabe der Treppensteigung_XX°details for pitch of stairs
 Werkstoff 1.4401_Material AISI 316

ALLE ANGABEN IN MILLIMETER_ALL DIMENSIONS IN MILLIMETERS