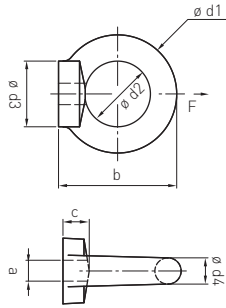


## RINGMUTTER\_EYE NUT



Artikelnummer Part number	a	b	c	ø d1	ø d2	ø d3	ø d4	MBK (kN)	F (kg)
838-0600-01*	M6	28	7	28	16	17	6	-	-
838-0600	M6	36	8	36	20	20	8-11	-	-
838-0800-01*	M8	36	8	36	20	20	8	-	-
838-0800 <a href="#">dwg</a>	M8	36	8	36	20	20	8-11	8,2	140
838-1000-01*	M10	45	10	45	25	25	10	-	-
838-1000 <a href="#">dwg</a>	M10	45	10	45	25	25	10-13	13,5	230
838-1200-01*	M12	53	11	54	30	30	12	-	-
838-1200 <a href="#">dwg</a>	M12	53	11	54	30	30	12-15	20,0	340
838-1600 <a href="#">dwg</a>	M16	62	13	63	35	35	14-17	41,2	700
838-2000 <a href="#">dwg</a>	M20	71	15	72	40	40	16-19	70,6	1200
838-2400 <a href="#">dwg</a>	M24	90	20	90	50	50	20-24	105,9	1800

Werkstoff 1.4401 | DIN 582 | geschmiedet  
 \*Ähnlich DIN 582 | gegossen und poliert  
 MBK= Mindestbruchkraft  
 F = Tragfähigkeit

Material AISI316 | DIN 582 | drop-forged  
 \*casted and mirror polished  
 MBK= Breaking load  
 F = Working load limit

ALLE ANGABEN IN MILLIMETERN\_ALL DIMENSIONS IN MILLIMETRES